

# RAIL REPORT

June 2013 • NO. 635

Rocky Mountain Railroad Club • Rocky Mountain Railroad Historical Foundation

## Denver Union Station – Portal To Progress

Presented by Jim Havey

June 11th, 2013 • 7:30 PM

In 1881 the largest building West of the Mississippi opened on the soggy edge of a tenacious frontier town. For over eighty years, Denver's Union Station bore witness to a procession of arrivals and departures that transformed the Rocky Mountain West. From 19th century regional gateway to 21st century multi-model hub, this film tells the story of the grand era of railroad travel and the awe inspiring structure that stands today at the crossroads of past glory and future promise. Award-winning filmmaker, Jim Havey, will introduce the DVD program and discuss the future plans for this grand community icon.

Please come join us for an enjoyable, educational evening at Christ Episcopal Church at 2950 South University Boulevard, University at Bates, where there is plenty of off street parking at the rear of the complex. Enter into Barnes Hall, where we hold the monthly meetings, on the mid-south side doors. Please bring a guest. **All programs are intended to provide an educational experience on railroading. The general public is welcome to attend. There is no charge for this meeting.**

### RMRRC 2013 Calendar

June 9th	Como Field Trip.
July 21st	UP Excursion in association with Cheyenne Depot Museum.
August 3rd	Florence & Cripple Creek Field Trip and Train Ride.
August 13th	Meeting and Program, "Ed Haley Rides the South Park Line to Leadville in 1936" presented by Chuck Albi.

Due to circumstances beyond our control, programs and dates are subject to change without notice. Please contact Pat Mauro at [pkmauro@yahoo.com](mailto:pkmauro@yahoo.com) or phone 303-838-7740 with program ideas.

## Denver Union Station – Portal To Progress



Denver Union Station as a transportation hub. – Photo © 2006 Havey Productions.

---

---

### Map Wanted

In 1963 the Club published the “Hotchiss’ Historical Railroad Map of Colorado – 1913” that was created and edited by Ed Haley. The map was sold either folded or flat, un-folded. The Board is considering doing a reprint of

the map and has a folded copy. However, if any Club member has a flat, un-folded copy that they would be willing to loan to the Club for scanning, please contact Dave Goss at [dave@dcgoss.com](mailto:dave@dcgoss.com) or call 303-693-9933. Thank You!

---

---

### Dr. H. P. Thode Estate Sale Items

Long time Club member Dr. H.P. Thode passed away recently and his son, Hank, is disposing of the estate. Hank has assembled a list of books and DVDs / VHS tapes that Doctor Thode owned and would like to make this listing available to Club members. You can contact Hank directly (970-482-8577; [paradox01@gmail.com](mailto:paradox01@gmail.com)) or Dave Goss

([dave@dcgoss.com](mailto:dave@dcgoss.com)) to obtain additional information on the titles available for sale.

Hank would prefer to give Club members the opportunity to have these books (all in fine condition) instead of donating them to an organization that would not appreciate their value.

---

---

### 75th Anniversary Masthead Photo Notes

To celebrate the 75th Anniversary of the Rocky Mountain Railroad Club, we will be featuring railroad equipment numbered 75 or with 75 in the number. This month features an October 1994 Joe Blackwell photo of Bangor and Aroostook Railroad Locomotive 75.

---

---

## Notes From The President

By Dave Goss

On Saturday, May 11, we held our first Saturday Club meeting since as far back as I can remember (but I forget many things now days). We had a few more than forty movie goers. Our intent was to offer a chance for members who do not like to drive at night or are distant from the Club's meeting location to attend. There were a few new faces, but by and large, the attendance was made up of our regular monthly attendees. I think everyone enjoyed *Ticket to Tomahawk* and the popcorn and soft drinks. The weather was perfect but the turnout a bit lower than expected. We may try this again next year as several folks suggested other movie titles that might be of interest to Club members. If you couldn't attend or want to tell how we might have planned that event differently, please let me or a member of the Board know your thoughts.

I hope you plan to join fellow Club members on a trip to Como, Colorado, the once bustling hub of the Denver South Park and Pacific / Colorado & Southern RR on Sunday, June 9th. Details are on page 5 of this *Rail Report*.

Another historic railroad grade tour will be the Florence & Cripple Creek Field Trip and Train Ride on Saturday, August 3rd.

We are planning a special three day trip on the Rio Grande Scenic Railroad operating out of Alamosa September 27, 28 and 29. Although not everything is finalized, the trip will be steam powered and is planning to go to several unique destinations such as Monte Vista

(and possibly Center), to LaVeta and to Antonito. We anticipate the tickets to be under \$200 per person for the three days, and will include some meals, but no accommodations.

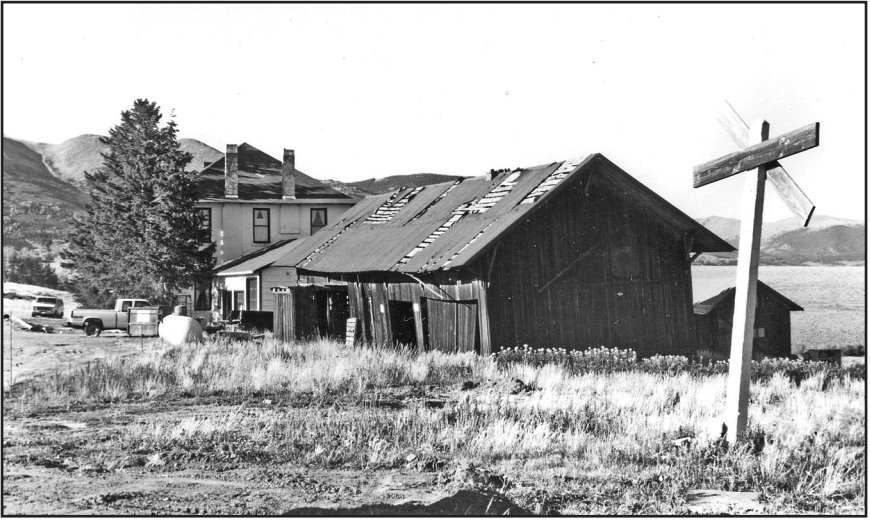
Another unique trip the Club conducted was the motor car trip on the Wagon Wheel Gap Line over Memorial Day weekend. Although completed before the mailing of this issue, we expect participants experienced a rare mileage opportunity and some great fellowship as Don Shank (of the Denver & Rio Grande Railroad) and members of the North American Railcar Operators Association (NARCOA) hosted Club members and guests at South Fork, Wason and Wagon Wheel Gap Station.

On page 5 of this *Rail Report*, you'll see that we have ordered and are awaiting arrival of some 75th Anniversary logoed memorabilia. These items will be available at Club meetings and shortly thereafter be able to be ordered on the Club's website. Prices are approximate for several items as production costs have not been finalized.

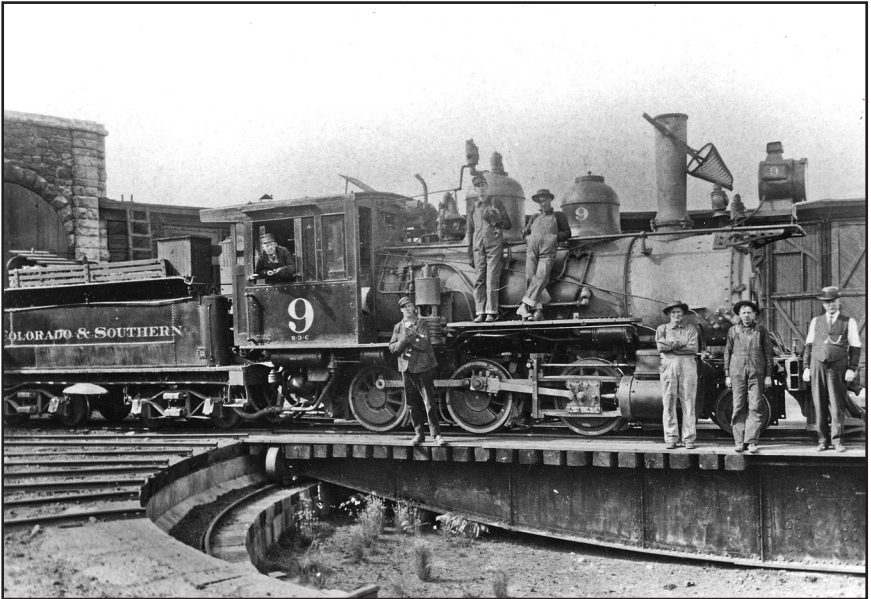
Finally, the Club and each of the other six partners who sponsored the RTD Excursion on April 20th received \$760 as their share of the profits for the event. Thanks to all who participated. We hope you'll enjoy some of the summer planned events as well.

Please do not hesitate to contact me at [dave@dcgoss.com](mailto:dave@dcgoss.com) or call me at 303-693-9933.

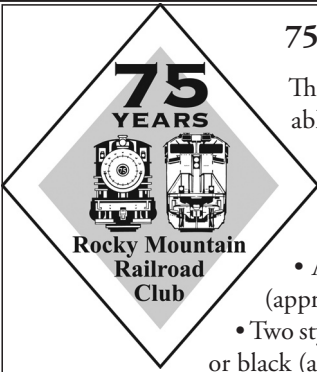
## Tour Como On Sunday, June 9th



The Como depot and hotel, as they appeared in September 2003. Join club members on June 9, 2013, and see the changes that have taken place as restoration progresses on the depot. – Photo © Tom Klingner.



C&S engine #9 is on the Como turntable, about 1915. Dream of days past in Como and remember the “Loyal Sons & Daughters of the Rusty Spike” – the name of long gone Club members who were fans of the South Park. – Photo from the A. A. Anderson Collection.



## 75th Anniversary Commemorative Items

The following commemorative items will be available for sale to members this summer at Club meeting and on the Club website:

- Enameled lapel pin (\$5.00 plus tax and \$1.00 for shipping)
- A 16 ounce glass beer / root beer mug with logo (approximately \$10 plus tax and shipping)
- Two styles of baseball caps with embroidered logo, khaki or black (approximately \$15 plus tax and shipping)
- 75th Anniversary logo patch (approximately \$4.00 plus tax and shipping).

All prices and availability will be finalized by June.

## Club Tour of Como, Colorado

Sunday, June 9th – 9:00 AM

Join fellow Club members on a trip to Como, Colorado, the once bustling hub of the Denver South Park and Pacific / Colorado & Southern Railroad! We will meet in Bailey at 9:00 AM at McGraw Memorial Park (Turn left at Bailey Propane at the bottom of Crow Hill, then immediate right to the park), then head to Como. We'll tour the Como Cem-

etry, take the walking tour of Como, tour the Depot and Hotel and roundhouse. We also plan to tour the King Coal Mine town site after the Como tour. The Como Depot will be open for lunch or bring your own lunch. If you want to car pool, please coordinate with other attendees on the trip, or call Pat Mauro, 303-838-7740.

## Georgetown Loop Special Lunch Charter – August 17

Join Club Members for a ride in a White Pass car behind a diesel engine.

Lunch is included and the choices are:

- Turkey Sandwich, potato salad and fruit cup.
- Ham Sandwich, potato salad and fruit cup.
- Veggie Sandwich, potato salad and fruit cup.
- Chinese Chicken Salad.
- Salami, Cheese, and Cracker plate.
- Hummus and Veggie plate.

All lunches include chips or a cookie, and a soft drink.

Tentative Itinerary:

- 11:40 AM Guests arrive at Silver Plume.
- 12:10 PM Club Train departs Silver Plume.
- 12:25 PM Club Train arrives at Hall Tunnel.
- 12:35 PM Steam train passes Hall Tunnel.
- 12:30 PM Club Train continues to Devil's Gate, Guests disembark to watch steam arrive and depart.
- 1:40 PM Club Train follows steam to Hall Tunnel, Box lunches are served. Steam will pass Hall Tunnel.
- 2:40 PM Club Train returns to Silver Plume and guests depart.

Order Tickets Using The Insert In The July *Rail Report*.



## June RMRRC Club Excursions



D&RGW #476 coming up grade with a Club Special near Falga. The pickup truck with a camper on the far right belonged to the late club member, Irv August. June 2, 1957. – Photo from the Tom Klinger Collection.



Denver & Intermountain #1107 & #1106 with D&RGW coaches and D&IM caboose #902 are on the REMCO siding for a June 6, 1948 excursion. – Bob Andrews photo, Tom Klinger Collection.

# Denver & Rio Grande Western RR K-27 “Mudhen” Number 463



Denver & Rio Grande Western Railroad 463, a K-27 Mudhen, once owned by Gene Autry, has been restored and is operational. Passengers rode a May 20, 2013, special with Cumbres & Toltec Scenic Railroad 487, a K-36, from Antonito, Colorado, to Chama, New Mexico. Here the train is approaching Cresco Tank. – Photo © 2013 Karl Rethwisch.



D&RGW 463 approaching the Sublette Water Plug. – Photo © 2013 Karl Rethwisch.



The coach arrives via Union Pacific.  
– Photo © 2013 Dave Naples.



The coach interior windows.  
– Photo © 2013 Dave Naples.

---

## Classic, Rare Passenger Coach Comes To Granby

A 108-year-old first class passenger coach arrived in Granby, Colorado, as the latest addition to the holdings of the Moffat Road Railroad Museum. The coach is a 1905 all-wood first class passenger coach that was originally placed in service by the Central Vermont Railroad. The car is nearly identical to the first class passenger coaches that were used by the Moffat Road trains that made their way over Rollins Pass between Grand County and Denver.

“It’s a very rare car,” said Dave Naples of the Moffat Road Railroad Museum. “It’s one of the last ones in existence. We’re very pleased to have it and to have the opportunity to restore it and save it for history. That’s what this is all about.”

After a year-long odyssey on four different railroads stretching across the United States from Rhode Island to the Rocky Mountains, the 70-foot-long, 75-ton railroad car finally arrived at its new home. A Union Pacific flat car delivered the coach to Granby on May 7th.

“This is a great new addition to our interpretive center,” Naples said. “It fits in well with the 1923 Union Pacific CA-

1 class all-wood caboose in place at the site along with an authentic 1930s-era hand-car and tool shed from the old Denver and Salt Lake Railroad.”

The car was donated by the now-deceased Allen Blik of Rhode Island. The journey to Grand County, however, cost \$41,000, most of which was paid by donations to the Moffat Road Railroad Museum. The Museum is currently looking for funding to build a cover over the coach for protection while they are working on restoration.

The Moffat Road Railroad Museum is dedicated to preserving and celebrating the legacy of the famous Moffat Road railroad line that crested the Continental Divide at 11,660 feet near Fraser, Colorado, in what was considered one of the greatest railroad engineering feats of its time. The Moffat Road over Rollins Pass ceased being used with the completion of the Moffat Tunnel railroad tunnel in 1928.

The Museum is located at 555 Park Road in Granby. For information call Dave Naples at 970-281-9094 or see: [www.moffatroadrailroadmuseum.org](http://www.moffatroadrailroadmuseum.org)



## Florence & Cripple Creek Field Trip and Train Ride

Saturday, August 3rd

Mark your calendars for a field trip on the grades of the Florence & Cripple

Creek RR through Phantom Canyon and the Cripple Creek Mining District.

---

---

### 2013 Steam Train Excursion

Denver to Cheyenne

• Sunday, July 21st

The Cheyenne Depot Museum is hosting the 2013 Steam Train Excursion. This is a one-way excursion from Denver to Cheyenne with the Union Pacific 844 Steam Locomotive. A bus is available to take passengers to Denver if needed. We will be loading in Denver at the National Western Complex, 4655 Humboldt Street.

For more information or for tickets go to [www.cheyennedepotmuseum.org](http://www.cheyennedepotmuseum.org) or call 307-632-3905.

Rocky Mountain Railroad Club Members pay “member” costs – please provide your RMRRC membership number.

Book now, dome seats go fast! For

Costs:	Member, Dome	\$ 150
	Member, Coach	\$ 90
	Bus Fare	\$ 30

---

---

### The Museum of Northwest Colorado

The Museum of Northwest Colorado in Craig opened its newest exhibit on Memorial Day, featuring 100 years of railroading on the famous Moffat Road. The exhibit highlights the railway’s history of the Yampa Valley with detailed dioramas, a virtual train trip, historic photos and intriguing artifacts. This new display will lead the visitor over Corona Pass down to the Yampa River valley, and detail how the line has served the region for over 100 years.

Gunfighter Collection, and offers a variety of exhibits which appeal to regional and national interests, as well as document local history.

The museum has hosted two Norman Rockwell exhibits in recent years that have attracted visitors from all over the west. The museum is located in the heart of downtown Craig, and is open year round, Monday through Saturday, with free admission. Visitors will want to visit the museum’s website for more information at [www.museumnwco.org](http://www.museumnwco.org) or call 970-824-6360.

The Museum of Northwest Colorado is also home to the noted Cowboy and

---

---

### Book Donation

The Club would like to thank member Jim Yust for his donation to the Club of his new book *Gore Canyon, The Colorado River and The Moffat Railroad – Then and Now*. Members are invited to contact Jim at [myranch80459@gmail.com](mailto:myranch80459@gmail.com). Jim is also Vice President of Museums for the Grand County Historical Association:

<http://www.grandcountyhistory.com/>

## The RTD West Rail Line Preview Excursion



The RTD West Rail Line Premiere Excursion train eastbound before crossing the 6th Avenue bridge on April 20, 2013. – Photo © 2013 Bruce Nall.

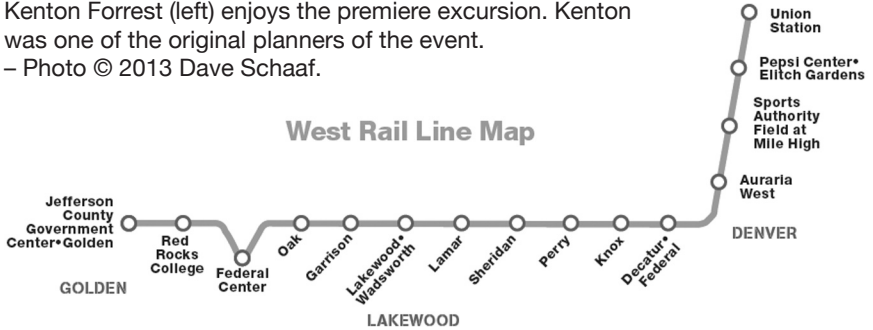


The RTD West Rail Line Premiere Excursion train westbound before crossing Quail Street on April 20, 2013. – Photo © 2013 Bruce Nall.

# The RTD West Rail Line Preview Excursion



Kenton Forrest (left) enjoys the premiere excursion. Kenton was one of the original planners of the event.  
 – Photo © 2013 Dave SchAAF.



Test trains were also running the day of the RTD West Rail Line Premiere Excursion, here westbound on the 6th Avenue bridge on April 20, 2013.  
 – Photo © 2013 Bruce Nall.



## The RTD West Rail Line Opening Weekend



An RTD West Rail Line train eastbound about to cross Lamar Street approaching the Lamar Station on April 27, 2013.

– Photo © 2013 Bruce Nall.



## Current Railroad Happenings



Union Pacific 844, Alco built 4-8-4, was separated from its tender and placed outside the UP Steam Shop at Cheyenne, Wyoming, on May 13, 2013. The steam crew did hot riveting on 844's firebox mud ring. At right is UP's Cheyenne Yard Tower. – Photo © 2013 by Chip.



Kansas City Southern 4104, SD70ACe, and KCS 4797, GE built model ES44AC, led BNSF's Lincoln, Nebraska, to Denver manifest across the Brush Subdivision via McCook, Nebraska, on May 3, 2013. The rear of the train can be seen to the right of KCS 4104. BNSF kept the H LINDEN train ahead of Z CHIDEN (Chicago to Denver intermodal hot shot) since KCS 4104 engineer had the power to make Denver in good time. Under construction at Tampa is a new Halliburton oil loading facility with future rail service. Tampa is west of Roggen, Colorado, along the Brush Subdivision. – Photo © 2013 by Chip.



## **Publishers Statement — Rocky Mountain Rail Report**

The Rocky Mountain Rail Report (ISSN 1040-9223) is published by the Rocky Mountain Railroad Club and the Rocky Mountain Railroad Historical Foundation.

First class postage paid at Denver, Colorado.

Postmaster, send address changes to:

Rocky Mountain Rail Report, PO Box 2391, Denver, CO 80201-2391

### **Club Information**

Rocky Mountain Railroad Club  
PO Box 2391  
Denver, CO 80201-2391  
Web: <http://www.rockymtnrrclub.org>

### **Club and Foundation Officers**

President	Dave Goss
Vice President	Pat Mauro
Secretary	Roger Sherman
Treasurer	Keith Jensen

### **Club and Foundation Directors**

John Charles, Nathan Holmes, Andy Dell, Dan Edwards,  
Mike Tinetti, Nathan Zachman, Dave Schaaf, Don Hulse.

### **Membership Information**

Membership in the Rocky Mountain Railroad Club may be obtained by sending the annual dues to the Club address listed above.

Regular membership dues are \$35.00. Overseas regular membership dues are \$45.00.

Contributing membership is \$50.00. Sustaining membership is \$70.00.

Patron membership is \$100.00. Golden membership is \$500.00.

An associate membership for spouses and children is \$25.00 additional.

Members joining after April may send a payment of \$3.00 for each month remaining in the year.

Members of the Rocky Mountain Railroad Club are also members in the Rocky Mountain Railroad Historical Foundation, the non-profit arm of the Rocky Mountain Railroad Club.

### **Board Meetings**

Members are always welcome to attend any board of directors meeting. Please contact any Club officer for the date, time and location.

### **Newsletter Contributions**

Newsletter contributions and items for publication should be sent to:

Bruce Nall, Editor  
Rocky Mountain Rail Report  
PO Box 620579  
Littleton, CO 80162-0579

E-mail: [selectimag@aol.com](mailto:selectimag@aol.com)

**Items for the July 2013 Rail Report should be sent by June 14th.**



BOX 2391  
DENVER, COLORADO 80201

